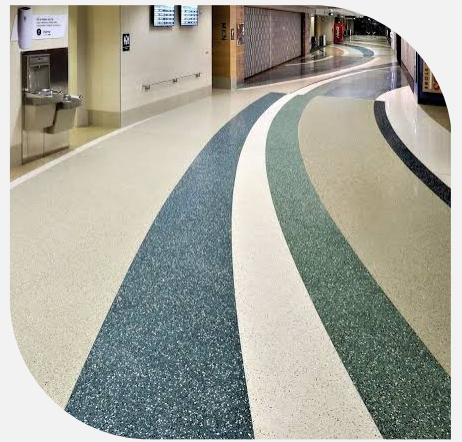


“ Terrazzo
is not just a
flooring material
it's a work of art”



TERRAZZO

Timeless Beauty...



WHY ACI ?

**India's leading & professionally managed organization
in Decorative Concrete Industry**

**10+ years experience in Decorative Concrete
products & solutions**

Expertise in managing 500+ projects across PAN India

**200+ technically qualified and expert team of applicators with
Pan India network**

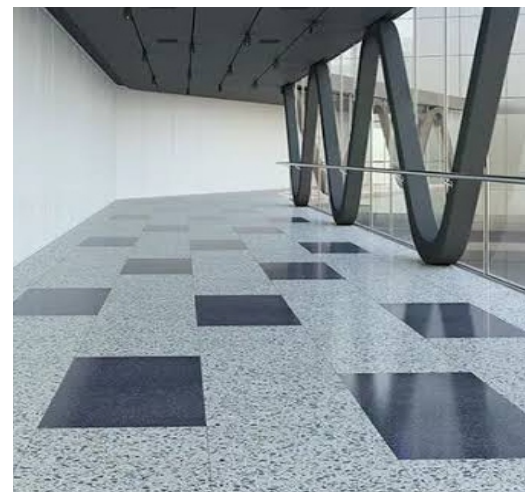
International technology partner



The origins of Terrazzo

Cement Terrazzo flooring is a composite material made from a cement binder and chips of marble, glass, or other materials. Terrazzo is made by mixing chips of marble, glass, or other materials with a cement binder. The mixture can be poured in place or prefabricated. **Terrazzo** is usually mixed on-site and troweled in place. After it cures, it's ground and polished to a smooth finish.

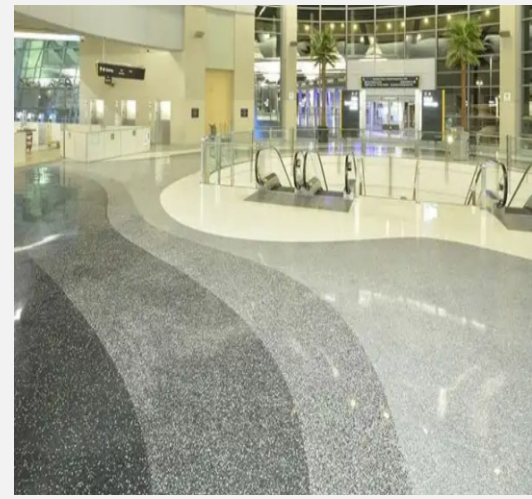
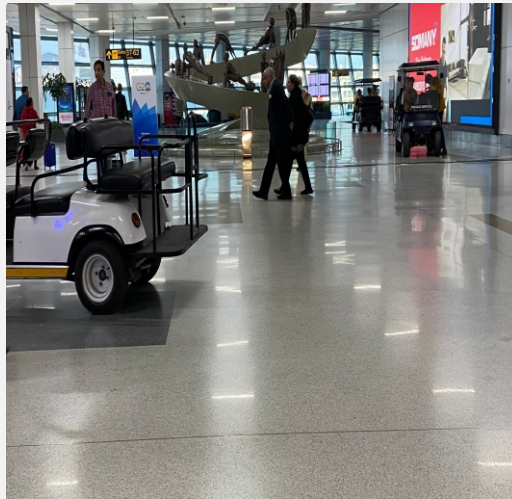
HISTORY AND CULTURAL SIGNIFICANCE





Epoxy Terrazzo flooring is a decorative, durable, and low-maintenance flooring material that combines the beauty of terrazzo with modern materials. Made from a variety of aggregates, pigments, and resins, epoxy terrazzo is poured in place to create a 8-10 mm thick surface. Epoxy terrazzo is highly crack resistant, customizable, and has many color choices and combinations.

WORK OF ART



TERRAZZO SHADES



Products & Solutions

TERRAZZO

MICROCEMENT

*Metal
Line*

*Legacy
Series*

VERTICAL

**Designer
Concrete**

**STONE
CRETE**

SANDS

HIGH PERFORMANCE
*Stamped
Concrete*

Polished
Concrete

 **INTEGRAL
COLORS**

Prestigious Clients


Reliance
Industries Limited

 **LARSEN & TOUBRO**


Shapoorji Pallonji


Assetz
empowered innovation


**Space
Designers**


KIMS
UNIVERSITY




**JINDAL
POWER**

 **LODHA**
BUILDING A BETTER LIFE


NYATI


AMANORA
PARK TOWN


GAR




**MAHA KUMBH
2025**




KMV
Projects Ltd.




PARANJAPÉ
SCHEMES
The Spirit Of New India


**STATUE OF
UNITY**
एक भारत, श्रेष्ठ भारत.


**NAHAR
GROUP**


ACI[®]
ARCHITECTURAL CONCRETE &
TOPPING SYSTEMS

Regd. Office : No - 73, Road no - 21 - Y, Wagle Estate, Thane (W) - 400 604

Factory & Warehouse : U - 42, Jai Mata Di Compound, Opp. Rajlaxmi Compound, Near King Corporation, Kalher,
Bhiwandi, Thane (W) 421302

Contact : 095942 67860 / info@aci-us.com / www.aci-us.com



Disclaimer:

All the color shades, designs and patterns are for reference and indications may vary depending on concrete, raw material availability locally and applications. Suggest to check actual samples and applications process before finalisation.