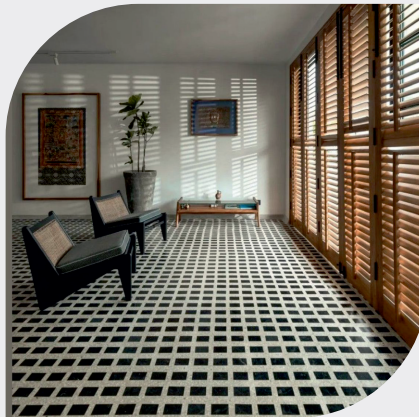


ART
MEETS
ARCHITECTURE



TERRAZZO

MICROCEMENT

POLISHED
CONCRETE

METAL LINE

LEGACY
SERIES

VERTICAL

DESIGNER
CONCRETE

WHY ACI ?

**India's leading & professionally managed organization
in Decorative Concrete Industry**

**30+ years experience in Decorative Concrete
products & solutions**

**Expertise in managing 500+ & 10 millions+ sq.ft.
projects across PAN India**

200+ technically qualified and expert team of applicators with PAN India network

Basket of innovative and sustainable products for interior and exterior

International technology partner

Premium quality raw material manufacturer & total solution provider

SOP based application process & timely delivery



INTERNATIONAL
COLLECTION



LUXURIOUS



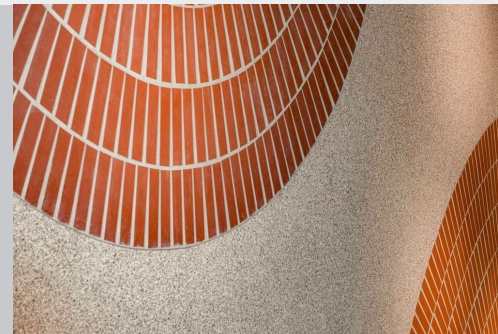
The origins of Terrazzo

Cement Terrazzo flooring is a composite material made from a cement binder and chips of marble, glass, or other materials. **Terrazzo** is made by mixing chips of marble, glass, or other materials with a cement binder. The mixture can be poured in place or prefabricated. Terrazzo is usually mixed on-site and troweled in place. After it cures, it's ground and polished to a smooth finish.



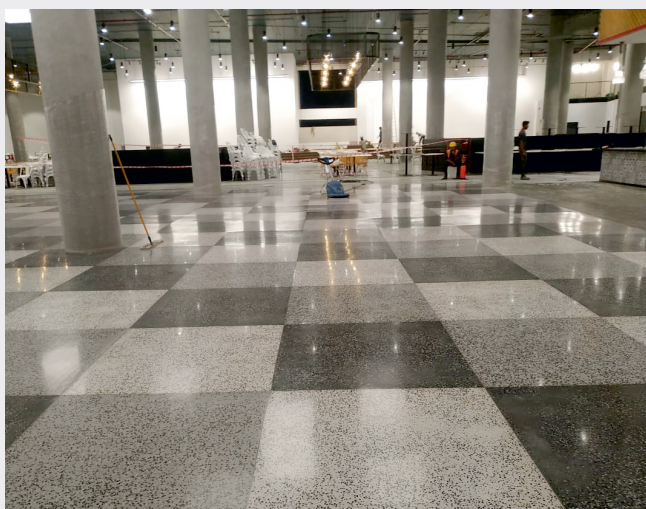
TIMELESS BEAUTY

Cement Terrazzo can be made in a variety of colors and patterns, and can include company logos, artwork, and other design features. Metal strips can be used to divide sections or create color changes. **Terrazzo** is often used in commercial spaces, schools, hospitals, and airports. It's also becoming increasingly popular in modern homes.



HISTORY AND CULTURAL SIGNIFICANCE





“ Terrazzo
is a
testament
to the
power of
recycled
materials,
transforming
waste into
a stunning
and sustainable
flooring ”



Epoxy Terrazzo flooring is a decorative, durable, and low-maintenance flooring material that combines the beauty of terrazzo with modern materials. Made from a variety of aggregates, pigments, and resins, epoxy terrazzo is poured in place to create a 6-10 mm thick surface. Epoxy terrazzo is highly crack resistant, customizable, and has many color choices and combinations.

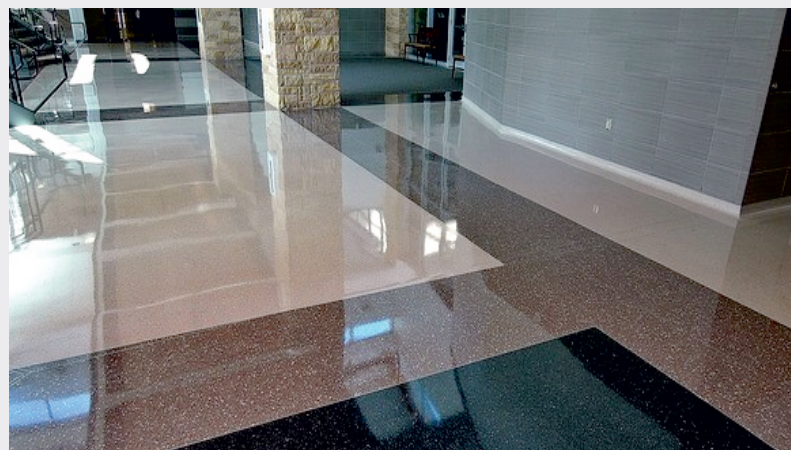


WORK OF ART

Epoxy Terrazzo comes in a wide range of colors and aggregate materials, including mother-of-pearl, marble, granite, flint, recycled glass, and mirror glass. Can be used in a variety of environments, including shopping malls, entertainment venues, hospitals, and airports.



LONG LIFESPAN | LOW MAINTENANCE





TERRAZZO SHADES





GET INSPIRED

A coating to create unique spaces

Microcement is a decorative coating with the appearance of natural stone. A material is capable of transmitting sensations incomparable to any other overlay. It's versatility enhances the aesthetics of **floor and walls, indoors and outdoors, kitchen fronts, showers, swimming pools** and an endless number of environments to which it provides **naturalness, elegance and exclusivity.**

The realism of its petrous beauty stands out.

ACI is inspired by the purest nature to create micro-cement and achieve its unique stone design.

Since 1940 we have been recalling in our work the role of nature in the origin of life.



AESTHETIC BEAUTY

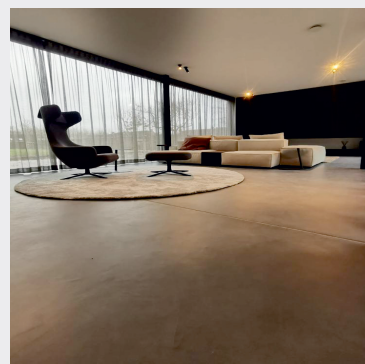
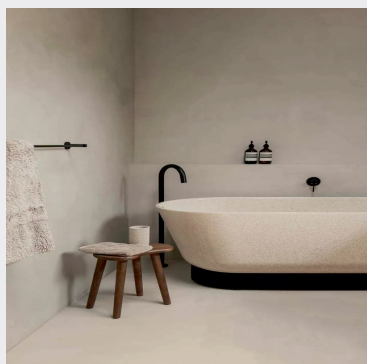
Pioneers in Microcement Manufacturing

ACI is a reality thanks to our experience in the chemical sector and our long-standing activity as manufacturers and suppliers of other microcement companies that market it under their own brand name.

This background allows us today to innovate and launch microcements with unique properties, without competitors in the market, capable of solving any architectural problem. Improvement and innovative spirit are two of the components of our essence that best define us.



INNOVATION | VERSATILITY



QUALITY

ACI microcement is composed of *high quality minerals, cements, resins, additives and mineral pigments.*

Use: it can be applied on both *vertical and horizontal surfaces*, thanks to its high adhesion. As well as in wet areas such as bathrooms or swimming pools.

Main advantage: it can be laid over existing material (*tiles, plasterboard, marble, terrazzo, concrete...*) without the need to remove the previous flooring or coating. This is possible thanks to the minimum thickness of the system (3mm). A room can be renovated with hardly any work or debris.



SUSTAINABILITY | DURABILITY



Truly different from the rest

if there is something that differentiates microcement from other alternatives, it is the absence of joints. Forget the unsightly joints of porcelain tile and floating flooring. Microcement is a continuous coating, which gives rooms, a unique feeling of endless spaciousness.

CRAFTSMANSHIP



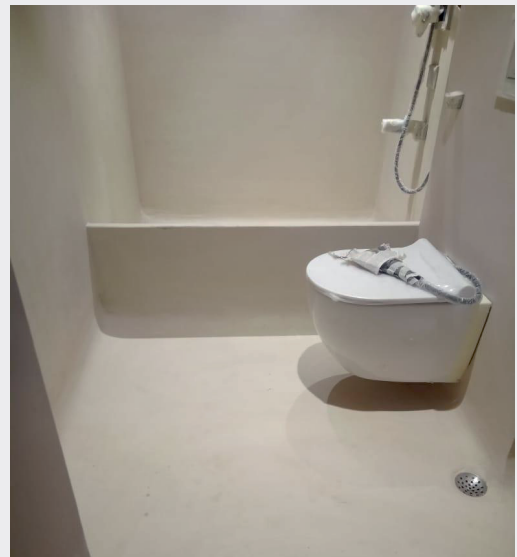
*"**Microcement** is not just a flooring material, it's a canvas for creativity, allowing designers to craft unique, high-end spaces."*

*"**Microcement** elevate surfaces from mere functionality to works of art, infusing spaces with warmth and character."*



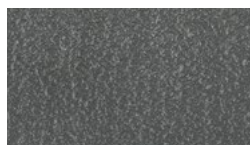
*"The art of **Microcement** application requires skill, patience, and attention to detail, resulting in a truly handmade, unique finish."*

*"**Microcement's** exceptional quality and craftsmanship ensure a premium finish that exceeds expectations."*

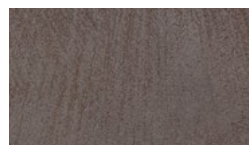




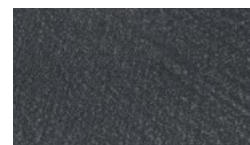
SHADE COLORS



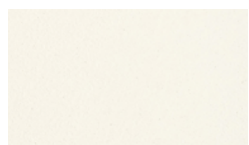
ACI 1001



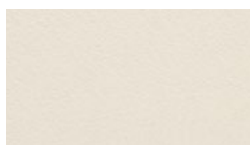
ACI 1002



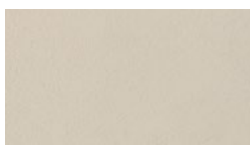
ACI 1003



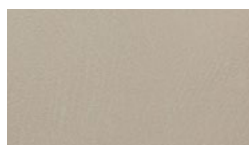
ACI 1004



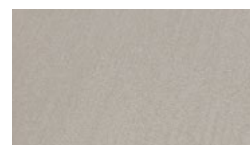
ACI 1005



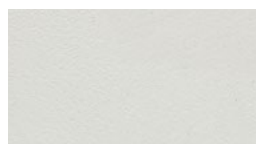
ACI 1006



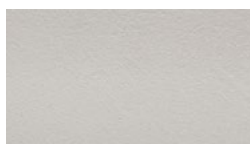
ACI 1007



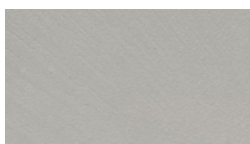
ACI 1008



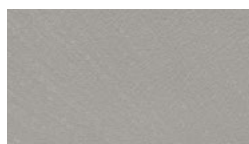
ACI 1009



ACI 1010



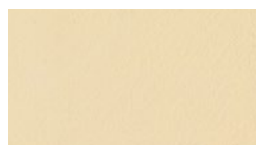
ACI 1011



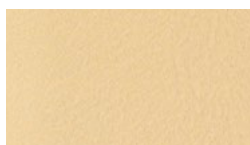
ACI 1012



ACI 1013



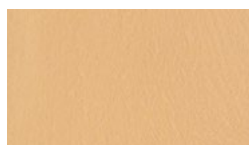
ACI 1014



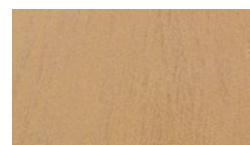
ACI 1015



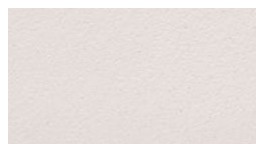
ACI 1016



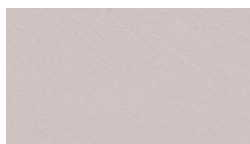
ACI 1017



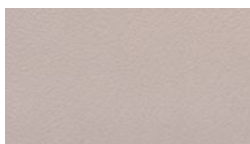
ACI 1018



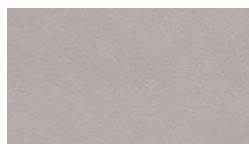
ACI 1019



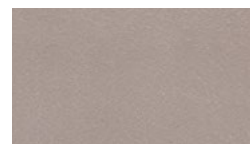
ACI 1020



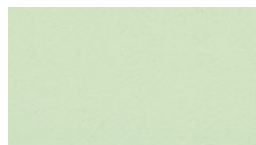
ACI 1021



ACI 1022



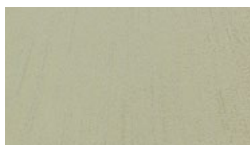
ACI 1023



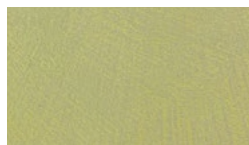
ACI 1024



ACI 1025



ACI 1026



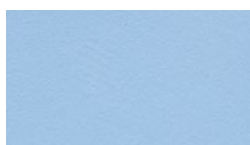
ACI 1027



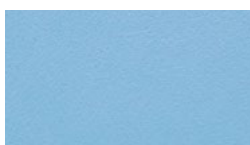
ACI 1028



ACI 1029



ACI 1030



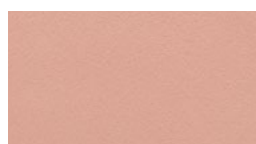
ACI 1031



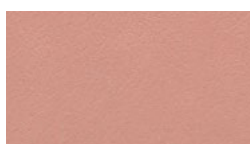
ACI 1032



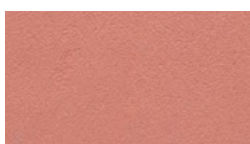
ACI 1033



ACI 1034



ACI 1035



ACI 1036



ACI 1037



ACI 1038



LUSTROUS

Polished Concrete has a variety of benefits that have made it an extremely popular flooring choice for *commercial and manufacturing facilities, shops and communal areas, as well as other high traffic environments.*

GLOSSY , MIRROR-LIKE FINISH



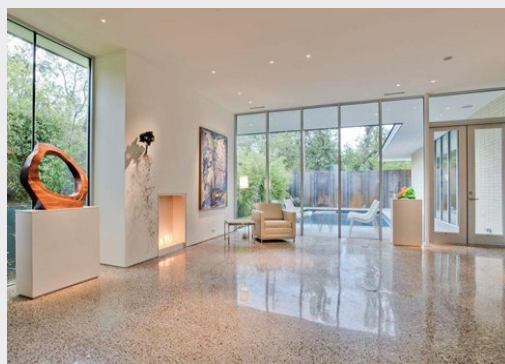
HIGHLY DURABLE | EASY MAINTENANCE

Polished concrete surfaces looks smooth and beautiful.

Polished concrete surfaces are moisture resistant, and therefore the flooring is waterproof and hence it is usually used where there experience rain often.



SLIP RESISTANT | CHEMICAL & THERMAL SHOCK RESISTANT





A polished concrete floor has vast design options. Choose nearly any color, create patterns with saw cuts, or embed aggregates or interesting objects into the concrete prior to polishing.

Polished concrete floors are installed by the grind and seal process.

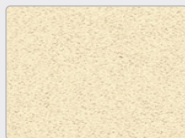
They look shiny and the surface is reflective. The misconception is there, that they are slippery, because the floor looks smooth. The truth is that not slippery even when the floor is wet.

The reflectivity of the floor can also be controlled by using different levels of concrete polishing.

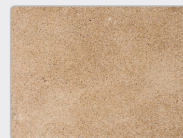
POLISHED CONCRETE SHADES



WHITE



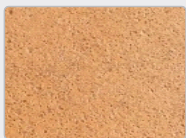
IVORY



BATH STONE



BROWN



ORANGE



RED



DEVON RED



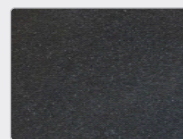
FRENCH STONE



GREEN



GRAY



SLATE STONE



DARK BROWN



PURE INDUSTRIAL STYLE

"ACI Metal Line" Liquid Metal coatings are an ideal solution to seamless craft with metal. The material, composed almost entirely of real natural metal, retains the inherent properties of metal like texture, lustre, heat conductivity and reflection, once it's applied and polished. "ACI Metal Line" coating can be applied in numbers of finishes like textured, smooth & bespoke using stencils. "ACI Metal Line" now a hot choice of architects to bring an element of real metal to walls, furniture, home accessories, garden piece, etc which is not only luxurious but even durable & adaptable to atmospheric conditions. "ACI Metal Line" is the first low and high thickness micro-coating for interior and exterior walls & furniture.



ACI Metal Line -

Iron - Antique iron effect paint Transform any surface into old oxidized iron. Extremely realistic to the touch, in the opacity and in non-homogeneous appearance. Thanks to chemical oxidation. The old rusty iron effect provides red, brown and orange rust spots of oxide with different shapes and sizes adjustable through application of the rust activator.

"ACI Metal Line" - **Iron Paint kit** :- A new age solution with which you can achieve the authentic look & feel of real rusty iron metals in a matter of just few hour without going through the lengthy process of metal casting, fabrication and waiting a long to get oxidized naturally.



NON FADING | SCRATCH RESISTANT | SEAMLESS APPLICATION POSSIBILITIES

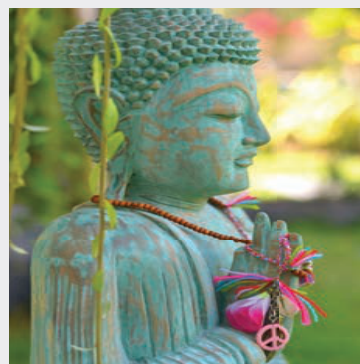


ACI Metal Line

Bronze / Brass

"ACI Metal Line"- Bronze gives the real lust of authentic bronze in its first age and at the other hand the lust can be transformed into an antique bronze with green patina effects in its older age that too in a matter of few hours. Transform any surface into new/old bronze. Extremely realistic to the touch, in the opacity and in non-homogeneous appearance. Thanks to chemical oxidation. The old bronze effect provides green and rust spots of oxide with different shapes and sizes adjustable through application of the patina activator.

WATER RESISTANT | DURABLE | NON-FLAMMABLE



Industrial touch in any setting

"ACI METAL LINE" can be used by architects, interior designers, set designers, and home owners to add individuality to interior and exterior walls, architectural ornaments, or decorative elements such as gates, home accessories, garden pieces, electrical poles etc.

Product Details

Metal kit variants : Bronze, Brass, Copper, Aluminium, Chromium & Iron Shelf Life : 1 year after opening

Interior Grade Metals : Bronze, Copper, Iron are best suited for interior surfaces

Exterior Grade Metals: Aluminium, Chromium and Oxidised variants of Bronze, Brass, Copper and Iron finally top coated with protective coating are best suited for exterior surfaces.

Suitable Base Substrates: · MDF · WPC · ACP · FRP · SS · MS · Wood · Glass · Vinyl · Acrylic · Ceramics



ACI Metal Line Aluminium -

Sparkling & luxurious real aluminium effect paint. This Aluminium liquid paint gives elegance to the substrate with its rich look.

It's a water based, single component metalized decorative finish with excellent workability, strain-resistance, anti mould & anti scratch preperation. It is ideal for interiors & exteriors with final protection.

ACI Metal Line - Chromium

There's nothing that makes more of a statement than a gorgeous, highlighter wall in liquid Chrome. With ACI Metal Line- Chrome, the real liquid metal, you can design eye-catching, seamless wall of Chrome metal or you can now easily give new & old furniture piece of any shape & size a glamorous metal look & elevate the look of entire space.



CRACK RESISTANT | EXCELLENT ADHESION | ANTI-FUNGAL



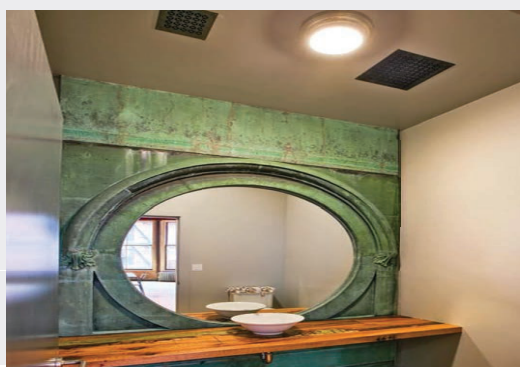
ACI Metal Line Copper

Fresh to **Antique copper effect** paint. Transform any surface into new / old oxidized copper. Extremely realistic to the touch, in the opacity and in non-homogeneous appearance thanks to the chemical oxidation. It is a painting cycle that makes the product really new copper as well as the surfaces can be turned into old oxidized copper, with all corresponding nuances of colour.

Patina Effect Classic Effect is a decorative effect imitating the phenomenon of covering copper surfaces with patina.

The combination of particular decorative mass and activating fluid enables the creation of patina effect on nearly all surfaces.

HIGH FLEXURAL STRENGTH | NON PEELING | LOW MAINTENANCE



The image shows a rustic interior space. On the left, there is a wooden cabinet with glass doors, displaying red bowls and a small figurine. A small table with a large, dark, rounded vase sits in the foreground. The walls are textured and light-colored, with dark wooden beams visible on the ceiling and walls. The overall atmosphere is warm and traditional.

Legacy Series

- 100% NATURAL
- ZERO VOC
- UNIQUE & AUTHENTIC
- CRAFTSMANSHIP

INTRODUCTION

ACI Legacy Plaster was born from a love of nature and belief in natural, sustainable building practices.

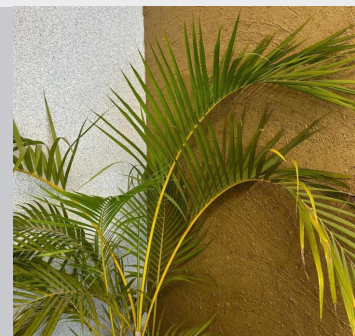
It was the result of over a decade of building and restoring with natural materials, travelling the world to learn about the traditions of ACI Legacy Plaster as a building material. The company has always believed in design being holistic and respectful of the needs of people and planet. manufacture readily available, affordable and easy to use natural clay & lime based plasters for interiors & exterior.



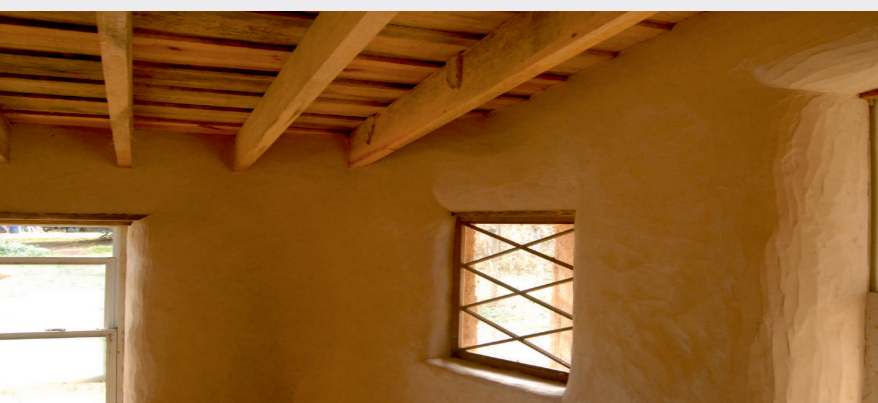
HIGH-PERFORMANCE | 100% NATURAL

What is ACI Legacy Plaster?

'Lime' refers to Quicklime and is made through heating Limestone (Calcium Carbonate) at high temperatures in a kiln. The Lime (Calcium Oxide) produced & rehydrated to form Hydrated Lime (a powdery substance), or 'slaked' and matured for 2-3 months in an excess of water to Form Lime Putty (which has a similar texture to toothpaste) both of these products form the basis of lime plasters, mortars and washes. During the process, Carbon Dioxide is emitted, but this is, re-absorbed when the lime materials slowly dry, set and harden. The re-absorption of Carbon Dioxide completes the 'lime cycle' and makes using lime environmentally friendly and sustainable.



LOW ENVIRONMENTAL IMPACT | NON TOXIC





PRODUCT COMPARISON

ACI Legacy Plaster products compare favorably with many common wall finishes such as gypsum, cement, plasters and conventional paints.

ACI Legacy Plasters are completely inert. They are non-toxic and release zero Volatile Organic Compounds (VOCs), rather absorbers CO₂ during its life span, making atmosphere healthier, weather applied interiors or at exteriors.

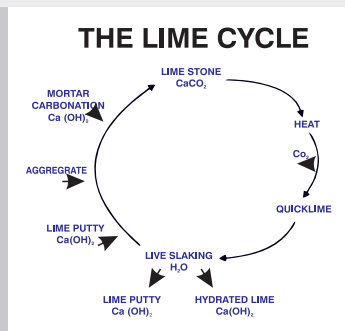
The materials used within these environments impact our physical and mental health. It is impressive that we design interiors that do not harm us, or better yet, and allow us to flourish.



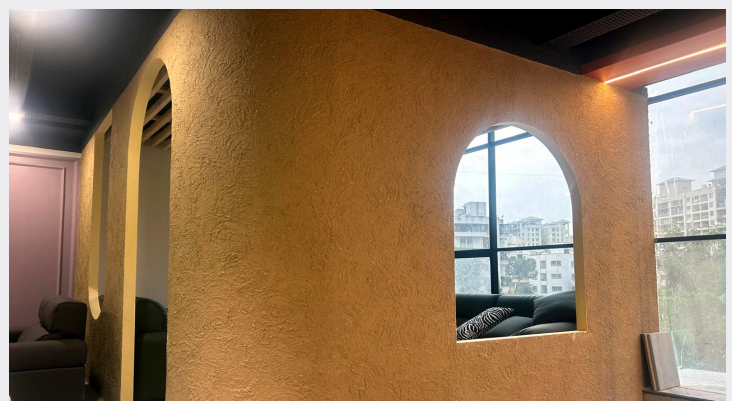
ZERO VOC EMISSION | BREATHABLE

Why Use ACI Legacy (Natural Hydrated Lime based plasters)

- ▲ Carbon Neutral- But why use Natural Hydraulic lime at all? Indeed lime products do take a long time to make, apply, get dry and achieve strength. However, the benefits using lime in your home (whether it is old or new).
- ▲ Better air quality index-lime plasters absorb carbon dioxide to get harder, this process is continuous for many years until the lime converts into lime stone and achieves its ultimate strength. Such re-absorption of CO₂, makes the air quality better, healthier and sustainable.



DURABLE | ANTI-BACTERIAL | AESTHETIC



AVAILABLE SHADES



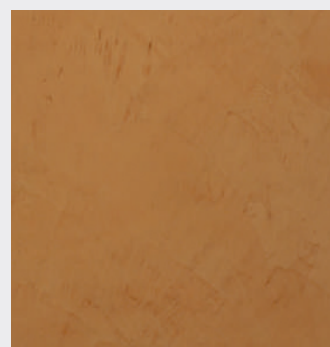
HP-02



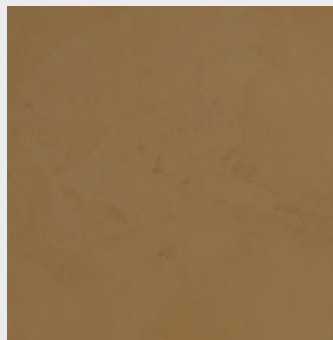
HP-03



HP-04



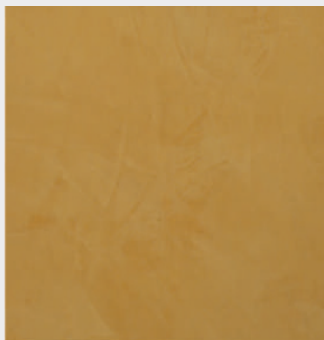
HP-05



HP-07



HP-09



HP-10



HP-WITH STRAW



*THE PICTURES ARE SHOWN HERE ONLY FOR REFERENCE PURPOSE ONLY. ACTUAL APPLICATION WILL BE DIFFER EVERY TIME.



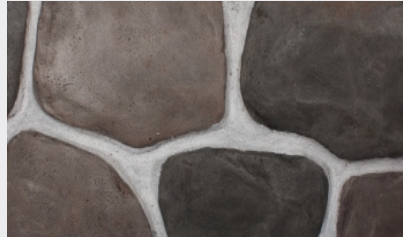
ELEGANT

Vertical stamping applications comes in various types, designs and colors. Types are **Natural Stone**, **Natural wood**, **English Brick**, **Travertino**. We have multiple choices to match your decor. They are easy for application and installations. It is beautiful and gives the aesthetic natural look to your wall.

NATURAL STONE

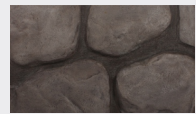


Thickness (mm) : 20-25



ACI01-01-I-C03-05-G13

ACI01-01-I-C04-15-08-W03

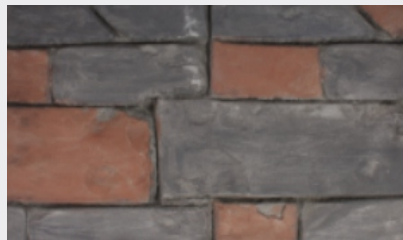


ACI01-01-I-C10-W03

ANTI-FUNGUS | FADE RESISTANT

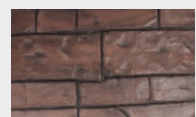
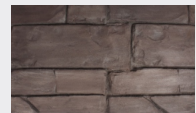


Thickness (mm) : 10-15

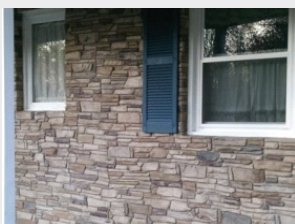


ACI04-01-I-C04-10-W07

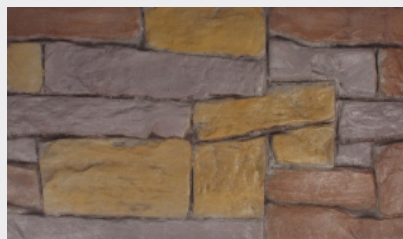
ACI04-01-I-C04+10-12+13-2+10-W05



ACI04-01-I-C02-04-W03

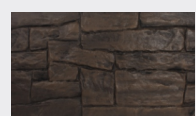
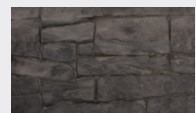


Thickness (mm) : 15-18



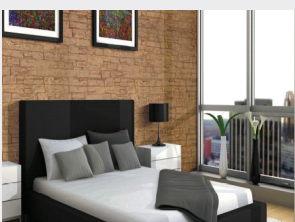
ACI18-01-I-C01-02-16-W05

ACI18-01-I-C10-W07

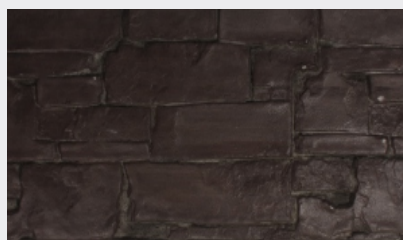


ACI18-01-I-C08-W03

DURABLE | LIGHT WEIGHT | COST-EFFECTIVE

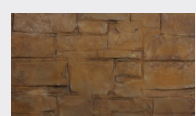


Thickness (mm) : 10-15



ACI17-01-I-C05-W07

ACI17-01-I-C14+1-1+13-14+05-16+1-W5+7



ACI17-01-I-C02-01-I-

NATURAL STONE



Thickness (mm) : 10-15



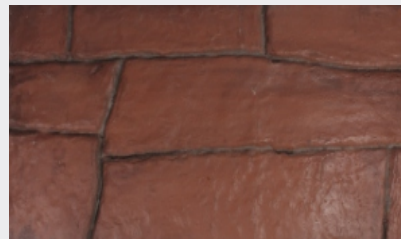
Thickness (mm) : 10-15



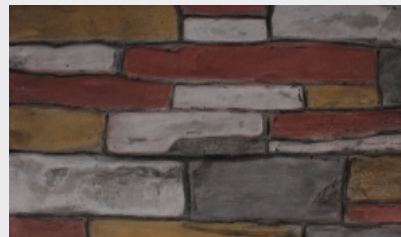
Thickness (mm) : 15-18



ACI06-01-I-C10-04-13-17-W05



ACI15-01-I-C04-W05



ACI05-01-I-C01-10-13-15-W03



ACI06-01-I-C04-W05



ACI06-01-IC03-W15



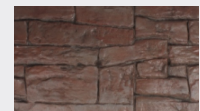
ACI15-01-I-C04-05-10-W06



ACI15-01-I-C02-08-12-W06

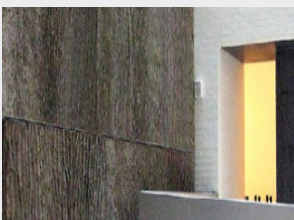


ACI05-01-I-C03-10-W03



ACI18-01-I-C02-04-15-W05

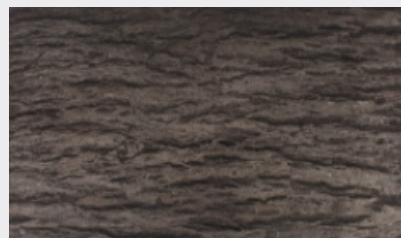
NATURAL WOOD



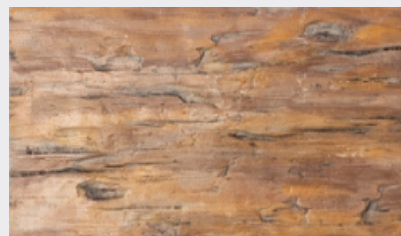
Thickness (mm) : 10-15



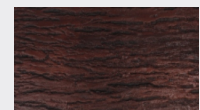
Thickness (mm) : 10-15



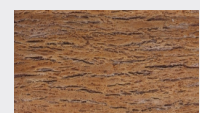
ACI28-01-C15-24-27-W31



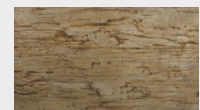
ACI31-01-I-C01-02-W03



ACI28-01-C25-211-W27



ACI29-03-C24-26-W21



ACI31-01-C03-14-W26



ACI31-01-I-26-W03

ENGLISH BRICK

English Brick are in various designs and colors. We have multiple choices to match your decor.

They are easy for application and installations. It is beautiful and gives the aesthetic natural look to your wall.



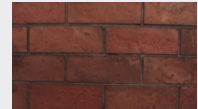
Thickness: 4-6 mm



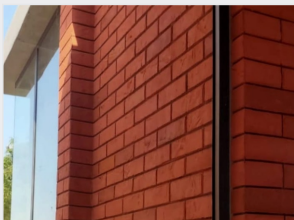
ACI33-02-06-C09



ACI34-W33



ACI37B03-06-C25



Thickness (mm) : 4 - 6



ACI33-03-06-C26-16-W30



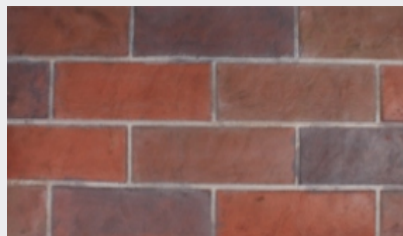
ACI34-06-W15



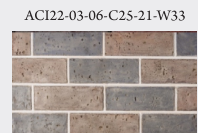
ACI33-C03



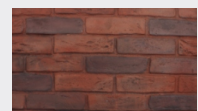
Thickness (mm) : 4 - 6



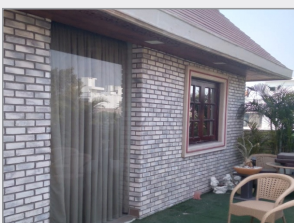
ACI33-03-06-C14-25-W33



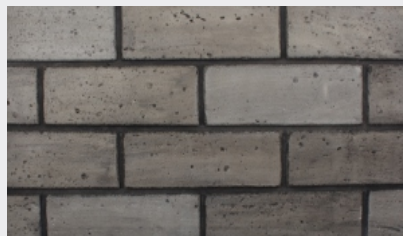
ACI22-03-06-C25-21-W33



ACI36-06-06-C16-10-W31



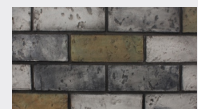
Thickness (mm) : 4 - 6



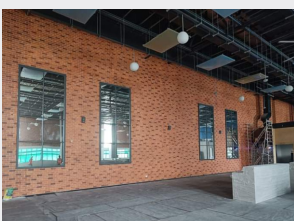
ACI38A-02-10-C18-W27



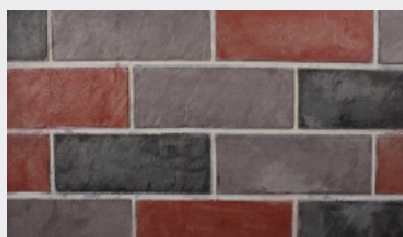
ACI33-03-09-C16-30-W33



ACI22-02-03-C28-29-W27



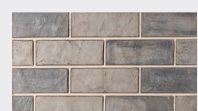
Thickness (mm) : 4 - 6



ACI33-03-07-C16-30-W30



ACI37A-02-03-C10-18-W27

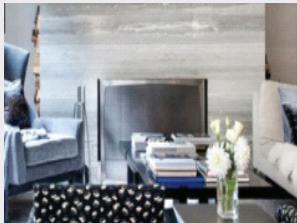


ACI33-03-01-C10

TRAVERTINO

Travertino comes in various designs and colors. We have multiple choices to match your decor.

They are easy for application and installations.



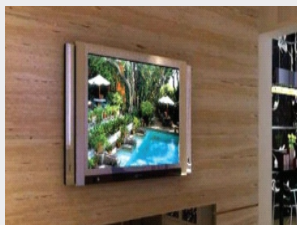
Thickness (mm) : 4 - 6



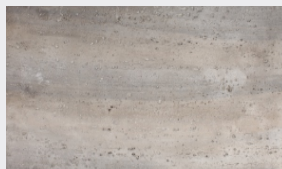
ACI38A-03-33-08-33-W27



ACI38A-03-C33-C08-27



Thickness (mm) : 4 - 6

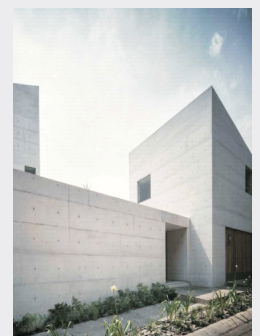
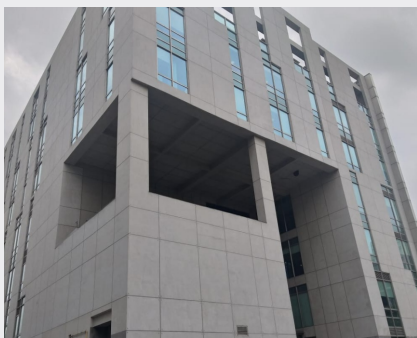


ACI38A-03-C33-C08-W27



ACI38A-03-C33-77-78-W27

BEAUTIFUL AND AESTHETIC NATURAL LOOK



Methodology

Step 1 – Apply base / Scratch coat

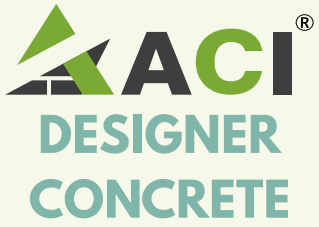
Step 2 – Apply top coat as per required thickness

Step 3 – Stamping matt in interlocking manner

Step 4 – Apply ascent enhancer for dual tone effect

Step 5 – Apply colour strainers & antique wash for antique look

Step 6 – Apply clear protective top coat



INTRODUCTION

While grey might be the first image that comes to mind when we think about concrete, allow us to help your mind's eye see a little further. As a common material, concrete displays essential beauty, with the natural appearance of a calm-charm. The material has a soft feel, a rigid sense of warmth with cold and flu, so architects believe that this is a noble simplicity, seems to be simple, in fact, more than the magnificent effect.



THE VISUAL CONCRETE

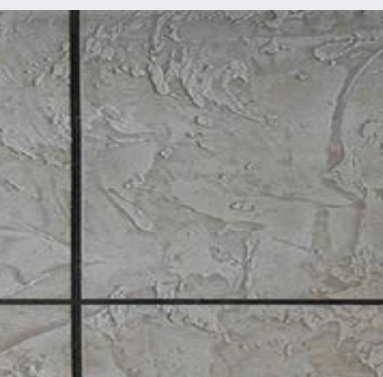
Redefining Aesthetics of Concrete

Concrete, of course, is a popular building material that creates a distinctive architectural style that is liked by many but a good impression can be spoiled if there are too many pores on what was supposed to be a smooth surface. If we overcome all these factors and develop working skills & techniques to control the behaviour of the concrete, it will help to achieve an architect's vision. Meanwhile, the finishing techniques can be revolutionary & economical, to transform colours & visuals.



HIGHLY DURABLE | EASY MAINTENANCE

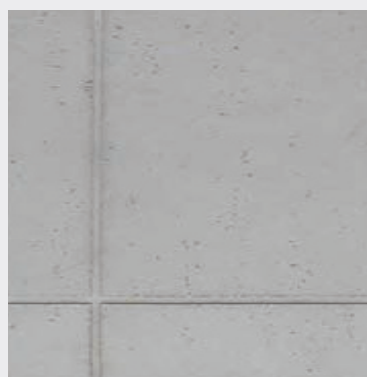
Trowel Marked



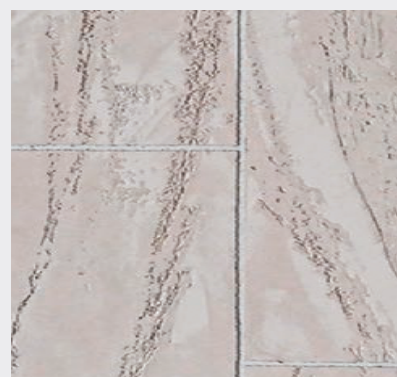
Rough Cast



Honey Combed



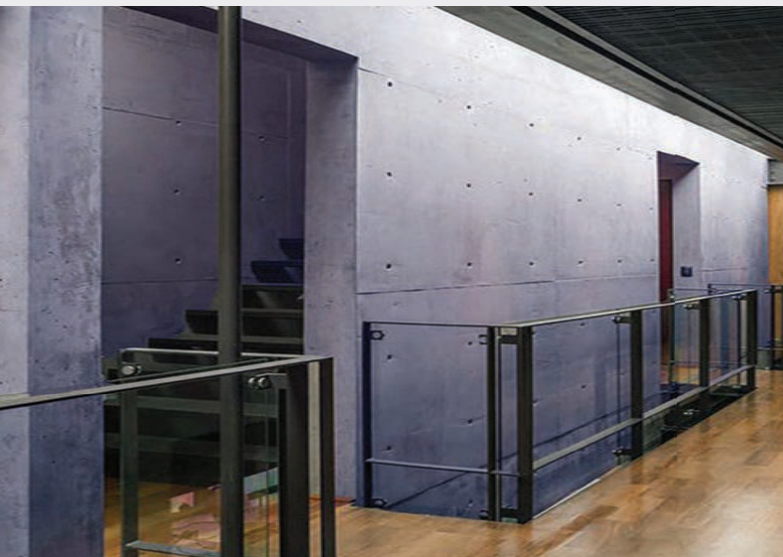
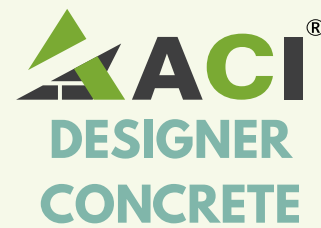
Travertino



INNOVATION AND DEVELOPMENTS IS A CONTINUOUS PROCESS

Now we present "**ACI Designer Concrete**". We observed that the visual concrete can be used as a style element, especially in the luxury or prestigious sector of architecture, be it a single family house, hotel or a company headquarter. Whether it is the exterior, interior, bedroom, stair, washroom, living or dining room, visual concrete speaks a chic lifestyle..

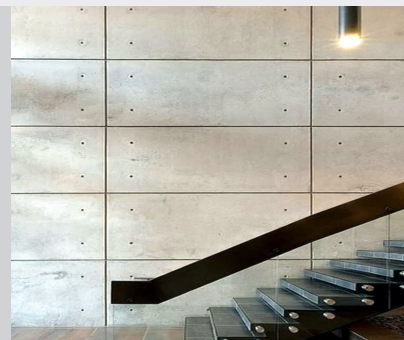
ACI Designer Concrete (the visual or exposed concrete) is a new revolutionary building material which is applied with a thickness of 2-5 mm.



ANTI-FUNGUS | FADE RESISTANT

ACI Designer Concrete is an effort to put into frame, the ideas of architects and designers to allow the concrete look fascinating and dramatic on walls, ceilings, floors and furniture, without compromising the rigidity and strength inherent in it.

ACI Designer Concrete is a modern concrete system comprising Nano cement, the hardest earthen material, polymer and special additives, modern technology, special tools and exemplary workmanship. This all together imparts our system a unique methodology to present concrete which is beautiful and withstands against the calamities of external weather.

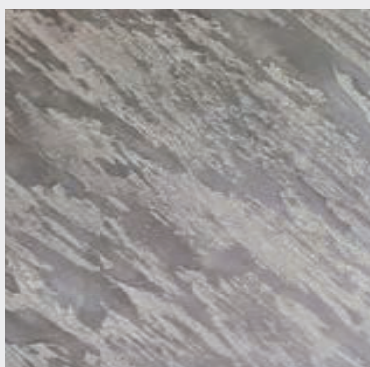


DURABLE | COST-EFFECTIVE

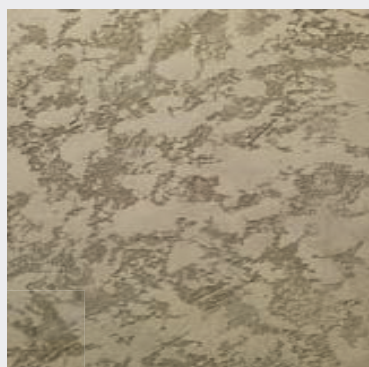
Fox Effect



Orgento



Dune Cast



Moroccan Plaster



ACI TERRAZZO (PRODUCT TECHNICAL DATA)

Specification	Approximate Value
Maximum aggregates size	2 -8 mm or as per request
Compressive strength	>75 N / mm ²
Flexure strength	>35 N / mm ²
Adhesion	Higher than base concrete
Wet density	~2000 kg/m ³
Water absorption	< 0.2%
Work time	Minimum 30-60 minutes, will be lesser when ambient temperature exceeds 28°C or humidity is less than 50%
Output coverage	~ 2.5kg to 3.5kg of resin + 17.5kg of filler & aggregates per sq.mtr for approx. 10mm thickness

ACI MICROCEMENT

DESCRIPTIONS

Microcement is a decorative coating with the appearance of natural stone. A material is capable of transmitting sensations incomparable to any other overlay. Its versatility enhances the aesthetics of floor and walls, indoors and outdoors, kitchen fronts, showers, swimming pools and an endless number of environments to which it provides naturalness, elegance and exclusivity.

PROPERTIES

- High resistance to abrasion (higher than concrete).
- Applicable on any type of support : concrete, cement, mosaics, even smooth ceramic tiles.
- The chemical reaction with CO₂ allows its hardness to improve with time.
- Excellent workability.
- Anti-slip
- High adherence to the substrate.
- High mechanical resistance.
- Breathable (permeable to vapour molecules).
- Stable to UV rays. Reflects light and heat radiation.
- Aseptic
- Antistatic.
- Low level of allergens.
- Low thermal diffusion
- Quick application and start-up. Its application does not required building works.
- Easy cleaning and maintenance.
- Ideal for decorations in which it is desired to use the same decorative finishes in different decorative surfaces, so it is very adaptable to floors, ceilings, walls, exteriors and interiors.

METHODOLOGY - APPLICATION METHOD

- 1. Preparation of surface** :- Make sure the surface should be free from oil, grease and all type of foreign items. Minor repairs should be make up with cement; sand mixture. Other than concrete plasters, other suitable surfaces are ply board, asbestos sheets and gyp board partitions, and all type of absorbent surfaces.
 - 2. Base coat** :- Apply 2 coats of MICROCEMENT - Base Coat with fiber glass mesh an average thickness of 1.5-1.7mm. MICROCEMENT - Base Coat is a polymer modified ceramic based material bonded primarily with in-organic binders. MICROCEMENT - Base Coat is a dry material and water should be added in to this to make it workable.
 - 3. Grooving and Taping** :- The dried base coat should be properly grooved or tapped as per the designs suggested by the engineers.
 - 4. Top Coat** :- Apply the MICROCEMENT - Top Coat of desired color with an average thickness of 1.7-2mm. MICROCEMENT - Top Coat is a polymer modified ceramic based material with special high performance additives, in-organic binders are the primery binding medium. MICROCEMENT - Top Coat is a dry material and water should be added in to it to make it workable. MICROCEMENT - Top Coat can be applied in desired pattern like honey combed (to be done with special tools), trowel marked, rough cast or in smooth.
 - 5. Protective Sealer** :- MICROCEMENT - Top Coat when gets dry, apply two coats of TC-5000 (exterior grade protective sealer). TC-5000 protects the surface from dust, dirt, fungus and stains.
- * **DURABOND** :- Bonding Agent to be Added with MICROCEMENT Base Coat. In Case Application is on non-absorbent surface like Wood Patch Board, Gypsum board, ply Board etc.

TEST RESULTS :-

Water Absorption (%)	3.23
Scrub Resistance	>500cycles
Slip & Mar Resistance	>500cycles
Appearance	Grey white powder
Dry Density	1.22 - 1.28 g/cm ³
Wet Density	1.8 - 1.95 g/cm ³
Pull-out strength	2.5 N/mm ²
Compressive Strength	≥4.5 N/mm ²

PACKAGING

Base Coat : Powder (5 kg) + Aggregate (3 kg) + Cembond (1 ltr)
Top Coat : Powder (5 kg) + Cembond (1 ltr)

GENERAL RECOMMENDATIONS

Observe whether the stability of the support is adequate. Supports with high mobility, such as certain metallic structures, may not be suitable. Expansion joints and structural joints must be respected.

SPECIAL PRECAUTIONS

This product contains cement. Avoid contact with eyes and skin, and avoid inhalation of dust. Low temperatures extend and high temperatures drastically reduce workability and drying time. Use rubber gloves and goggles. Keep out of reach of children. Do not apply the product at room temperature below 5°C or above 30°C.

STORAGE CONDITIONS

Microcement Material should be stored in its original closed containers and protected from the weather. The shelf life is 12 months from the date of manufacture, properly preserved.

ACI Products & Solutions



Microcement



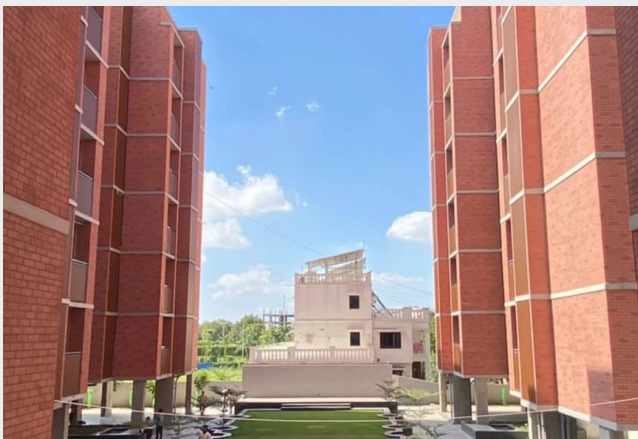
Polished Concrete



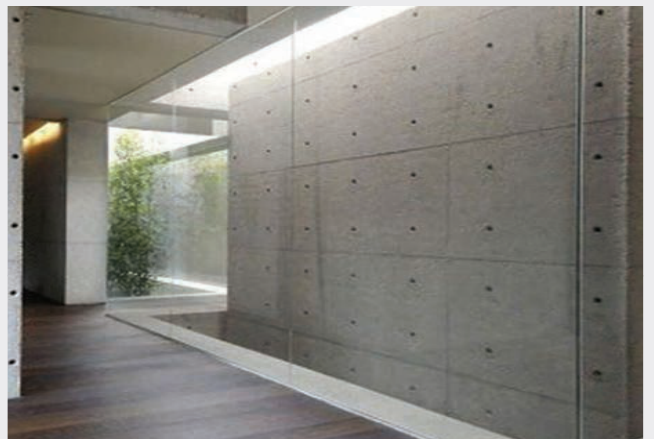
Metal Line



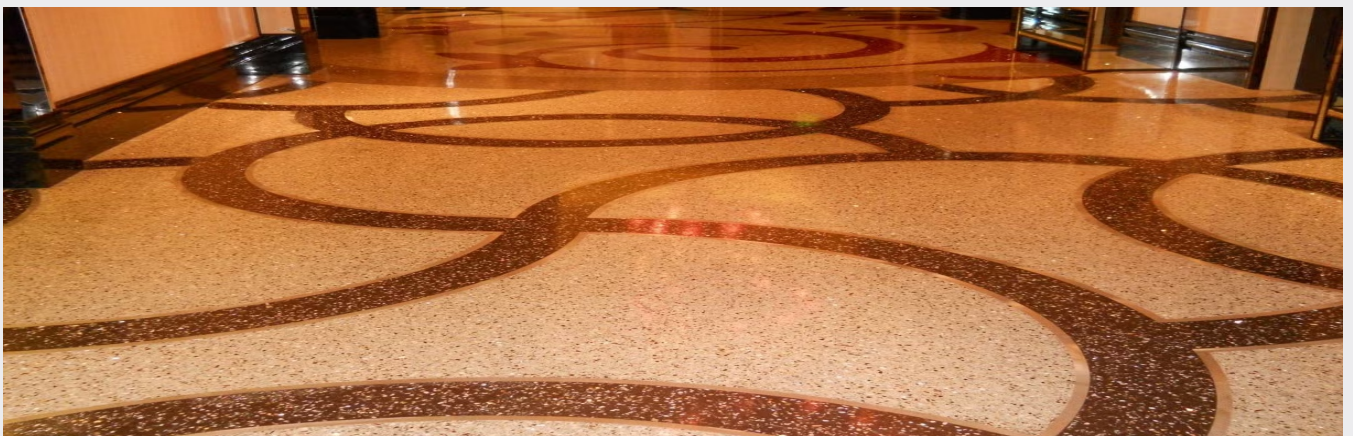
Legacy Series



Vertical



Designer Concrete



Terrazzo

Prestigious Clients



Space
Designers



- Reliance Industries Ltd - Jamnagar
- KDMC - Kalyan
- KMV Ltd - Shivamogga, Karnataka
- BMC - Mumbai
- Shapoorji & Pallonji - Mumbai
- NMMC - Navi Mumbai
- CPWD - Powai, Mumbai
- Krupa developers - Mumbai
- Nature Touch Landscape - Pune
- HDFC house - Mumbai
- Chug Realty - Indore
- Ayodhya - Uttar Pradesh
- EFGH Pvt Ltd - Vizog
- Paranjape Scheme - Pune
- Niyati Construction - Pune
- CSIL - Prayagraj
- Mahavir Enterprises - Pune
- Gallent Infrastructure - Gorakhpur
- GMR - Goa
- Omega Developers - Lucknow
- Assetz - Bangalore
- Vastusarjan - Lucknow
- Space Designers - Ayodhya
- Embassy Splendid Techzone - Chennai
- Baba Traders - Gorakhpur
- Krishna Builder - Ujjain
- Ansh Associate - Gorakhpur
- Tata Project - Joka, Kolkata
- Bhardwaj Park - Prayagraj
- Lodha developers - Mumbai
- Reliance Jio - Ghansoli
- Lavin Infra - Ujjain
- Pravesh Enterprises - Indore
- Moraj Residency - Navi Mumbai
- Rashtriya Udyan - Lucknow
- SD Corporation - Mumbai
- Cozy Essence Elite - Hyderabad
- SR developers - Pen (Raigarh)
- MTDC - Chandrapur
- Krishna Institute - Karad
- Statue of Unity - Vadodara
- Lulu Mall - Lucknow
- UltraTech - All India
- Radiant Hotel and Spa - Gorakhpur
- Green Berry School - Lucknow
- Aarna Architect - Hyderabad
- Tirupati Infra - Ujjain
- Unnati Infra Developer - Mohali
- Mapletree Property Pvt. Ltd. - Mumbai
- Amanora - Pune
- Chandigarh Government



Regd. Office : No - 73, Road no - 21 - Y, Wagle Estate, Thane (W) - 400 604

Factory & Warehouse : U - 42, Jai Mata Di Compound, Opp. Rajlaxmi Compound, Near King Corporation, Kalher, Bhiwandi, Thane (W) 421302

Contact : 99755 52621 / 95942 67860 / info@aci-us.com / www.aci-us.com



Disclaimer:

All the color shades, designs and patterns are for reference and indications may vary depending on concrete, raw material availability locally and applications. Suggest to check actual samples and applications process before finalisation.